



**Crest**  
Commercial Realty

# LAND FOR SALE

**Two (2) Parcels**

**6101 Webster St.**

**Dayton, OH 45414**



**Thunderhawk Ct**

**Webster St**

**Heavy Duty  
Parts Building**

## Property Highlights:

- Zoned OSI-2.
- Close proximity to I-75.
- Two (2) parcels:
  - Tract 1 - E21 01003 0238, 2.852 acres
  - Tract 2 - E21 01003 0237, 3.0405 acres
- Located between Thunderhawk Court and Nordic Rd.
- Sewer and drive easements
- Sale Price: \$360,000

**Tim Albro**

O 937-222-1600 Ext. 104

C 937-609-8071

talbro@crestrealtyohio.com



6601 Centerville Business Parkway - Dayton, OH  
45459 937-222-1600 [www.crestrealtyohio.com](http://www.crestrealtyohio.com)

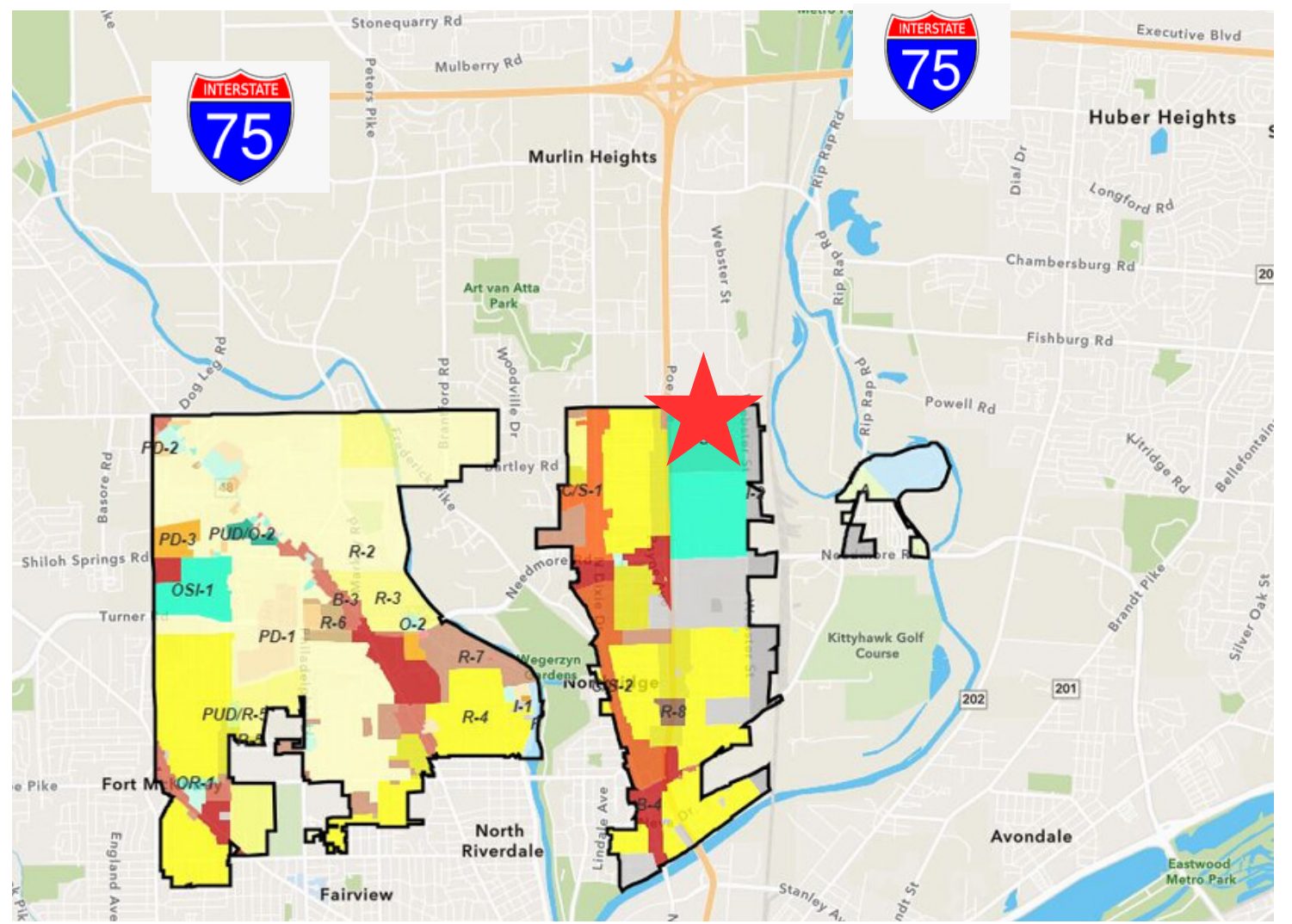






# Crest

Commercial Realty



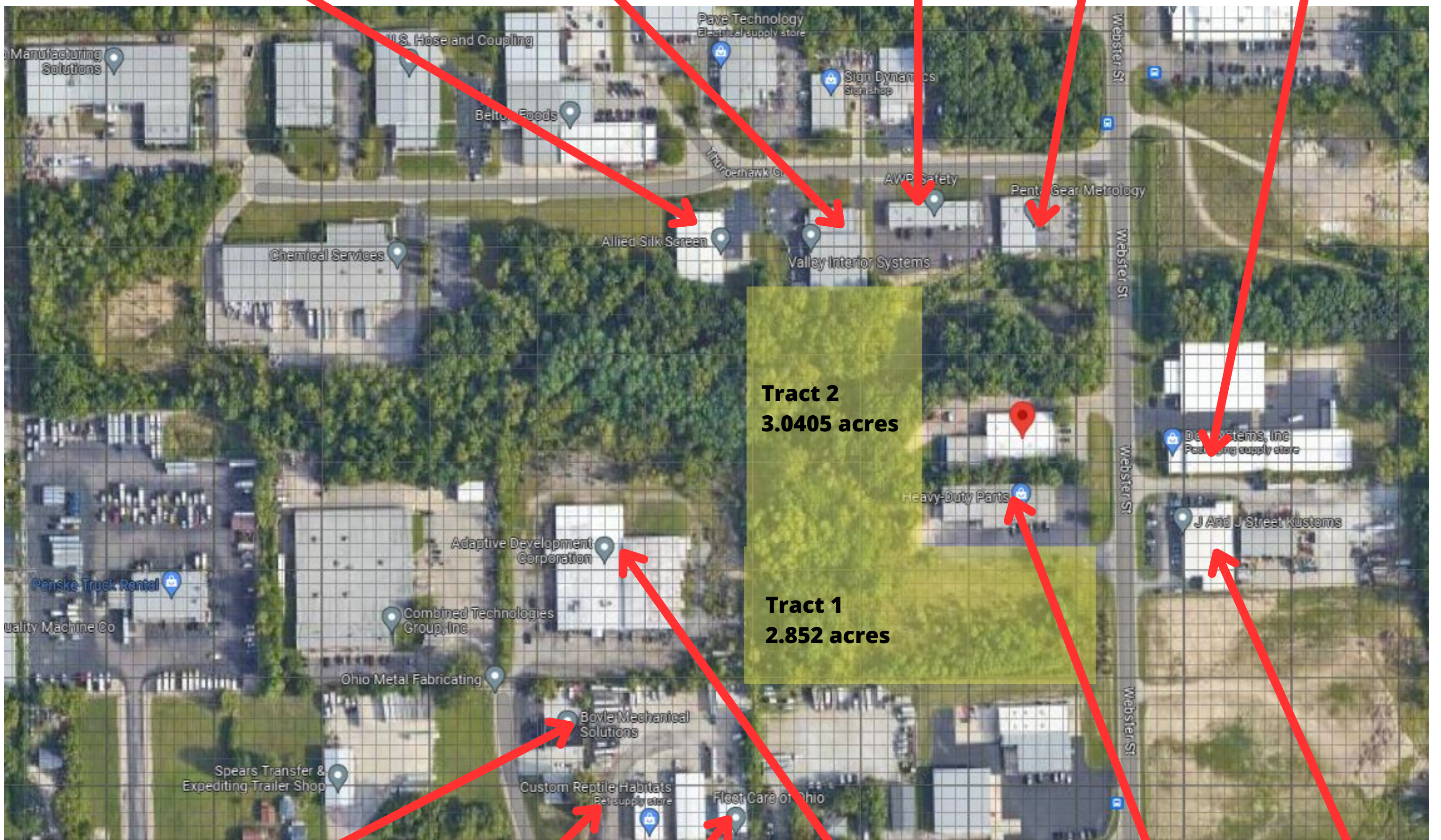
Allied Silk Screen

Valley Interior Systems

AWP Safety

Penta Gear Metrology

Dot Systems Inc



Tract 2  
3.0405 acres

Tract 1  
2.852 acres

Bovie Mechanical Solutions

Custom Reptile Habitats

Fleet Care of Ohio

Heavy Duty Parts Building

J And J Street Kustoms

Adaptive Development Corporation

## Tim Albro

O 937-222-1600 Ext. 104  
C 937-609-8071  
talbro@crestrealtyohio.com



6601 Centerville Business Parkway - Dayton, OH 45459  
937-222-1600 [www.crestrealtyohio.com](http://www.crestrealtyohio.com)

