



Crest
Commercial Realty

Medical / Office FOR LEASE

1475 - 1495 W. Main St.,
Tipp City, OH 45371



Property Highlights:

- Multi-unit building located just minutes from I-75.
- Move-in ready with high-end finishes.
- Prominent signage visible from W. Main St.
- Convenient parking.

Perfect for Medical Professionals!

- Two suites available:
 - 1479 ~ 1,509 SF
 - 1487 ~ 2,504 SF
- Existing reception area/waiting room, private offices and exam rooms in both suites.
- Lease Rate: \$16.50 SF/MG

Tony Taylor

O 937-222-1600 Ext. 103
C 937-776-0419
ast@crestrealtyohio.com



Tracy Rutherford

O 937-222-1600 Ext. 121
C 937-414-2271
trutherford@crestrealtyohio.com





Crest

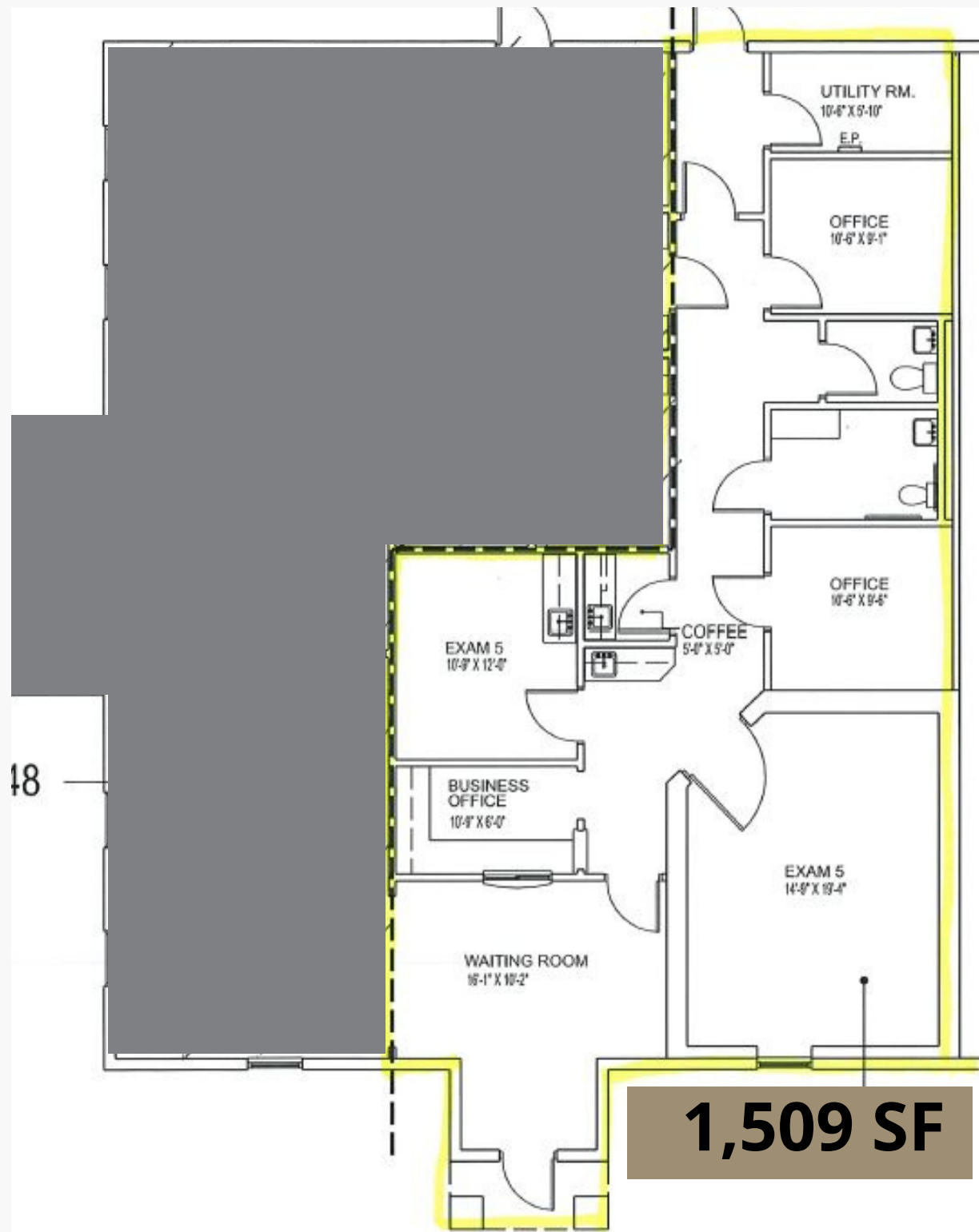
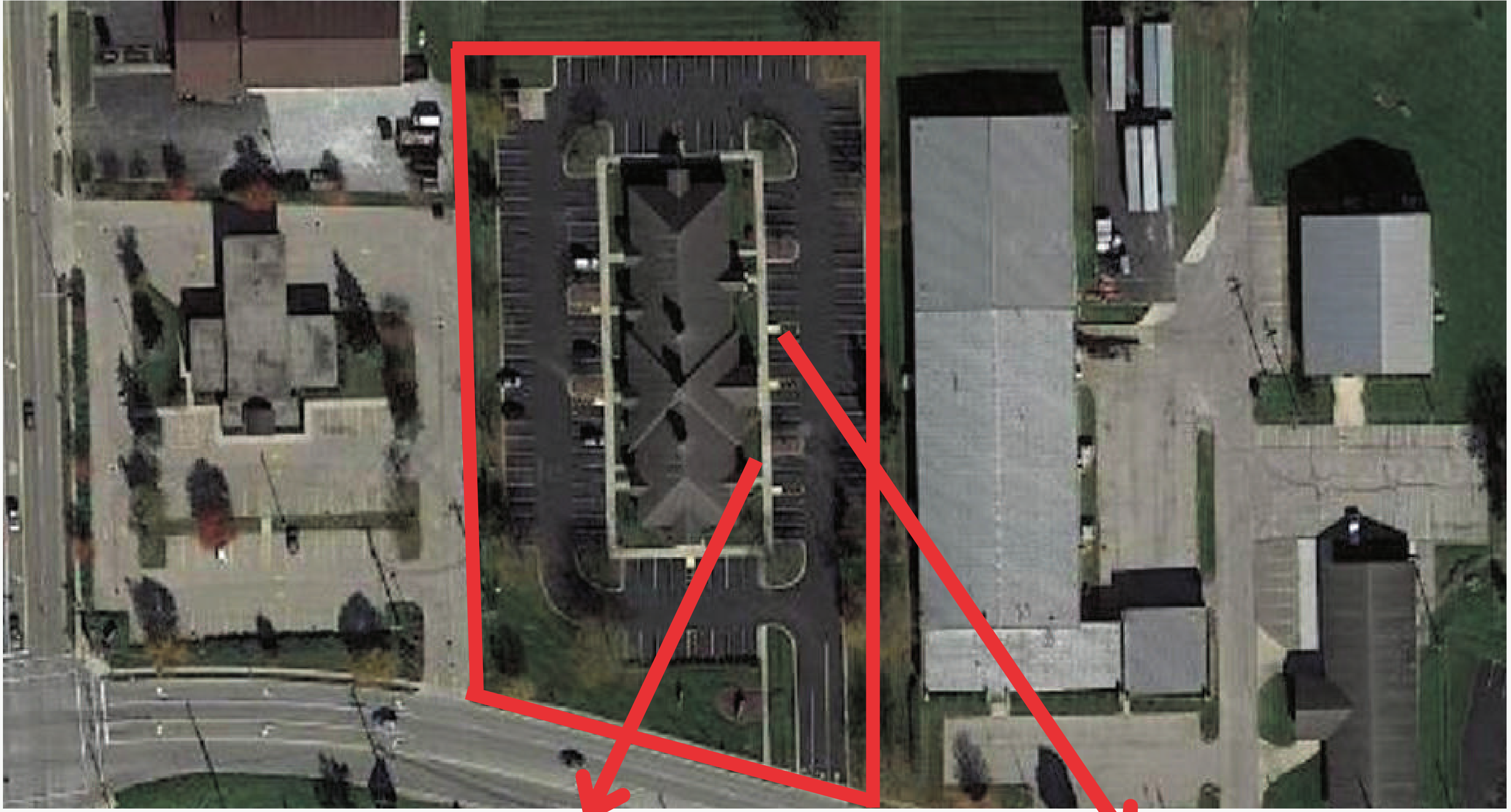
Commercial Realty





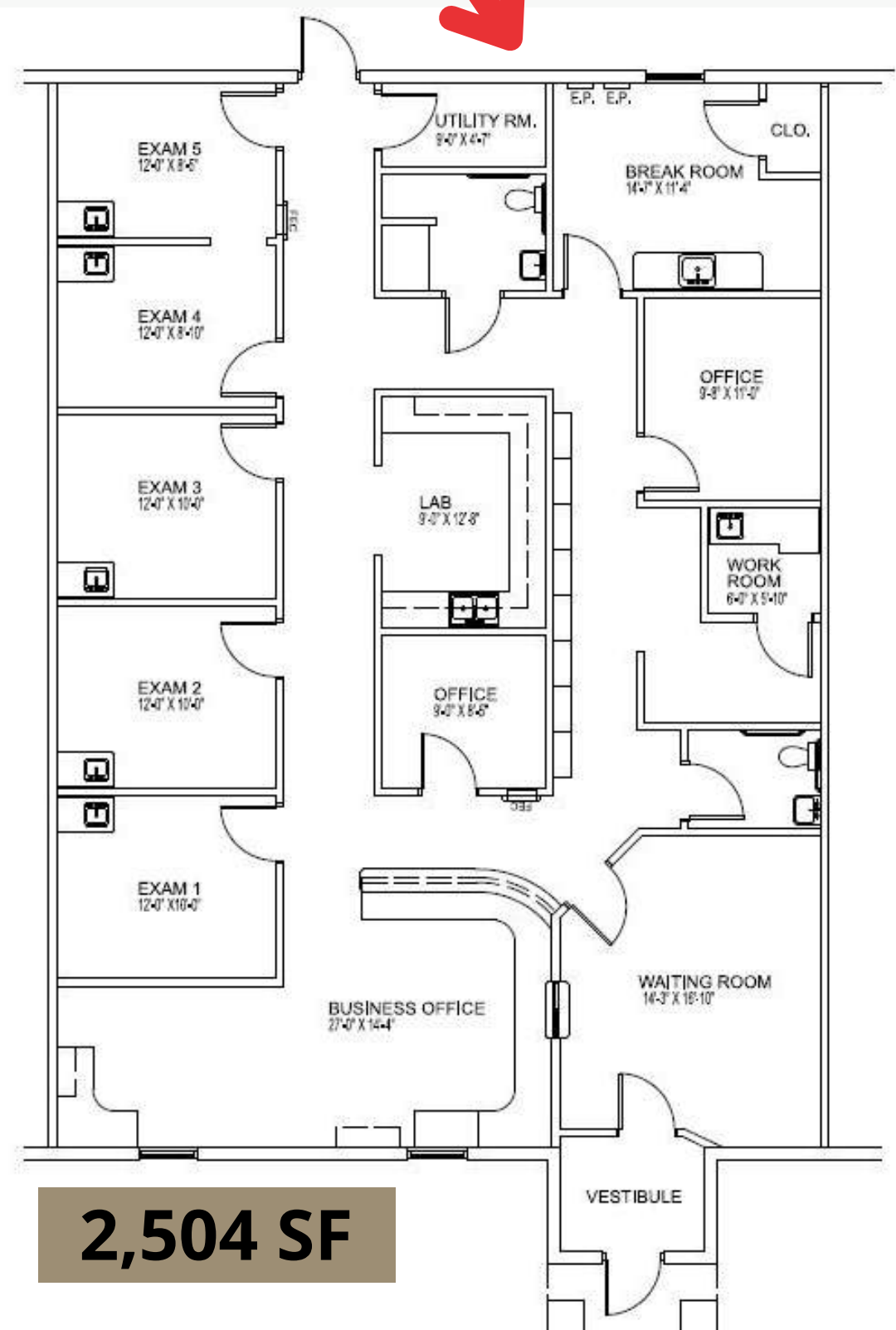
Crest

Commercial Realty



PROFESSIONAL BUILDING
Street, Tipp City, OH 45371

SQUARE FOOTAGES PERFORMED USING
ANSI / BOMA STANDARD
THIS DRAWING COMPLETED WITH LIMITED
FIELD OBSERVATION. VERIFY ALL DIMENSIONS



TIPP CITY PROFESSIONAL BUILDING
1487 West Main Street, Tipp City, OH 45371

SQUARE FOOTAGES PERFORMED USING
ANSI / BOMA STANDARD
THIS DRAWING COMPLETED WITH LIMITED
FIELD OBSERVATION. VERIFY ALL DIMENSIONS



Crest

Commercial Realty



DEMOGRAPHICS

	2-mile	5-mile	10-mile
Population			
2022 Population	12,951	32,217	176,374
2027 Projection	13,577	33,725	179,874
Age			
2021 Population	43	42	41
Household Income			
2021 Avg Household Income	\$96,835	\$94,967	\$79,974
2021 Med Household Income	\$75,683	\$75,396	\$66,209
Housing Value			
Medium Home Value	\$191,129	\$192,479	\$154,479

*Demographics provided by CoStar Group, www.costar.com, 2022 dataset