



Crest
Commercial Realty

Industrial Building FOR SALE \$550,000

1990 Berwyck Ave., Dayton, OH 45414



For more information,
please contact:

**Tracy
Rutherford**

O 937-222-1600 Ext. 121

C 937-414-2271

trutherford@crestrealtyohio.com



- **16,500 +/- SF on 1.2 acres.**
- Includes 3,000 +/- SF office space.
- Light-filled office areas on both floors.
- Well-suited for manufacturing/warehouse.
- Heavy Power, 3 Phase.
- Heating and cooling throughout building.
- 14' and 16' overhead doors.
- Private lot, ample parking.
- Easy access to I-75 and just minutes to I-70.
- **Lease rate: \$4.80 SF/YR/NNN.**





Crest
Commercial Realty

**Industrial Building
FOR SALE
\$550,000**



1990 Berwyck Ave., Dayton, OH
45414



Tracy Rutherford

O 937-222-1600 Ext. 121
C 937-414-2271
trutherford@crestrealtyohio.com



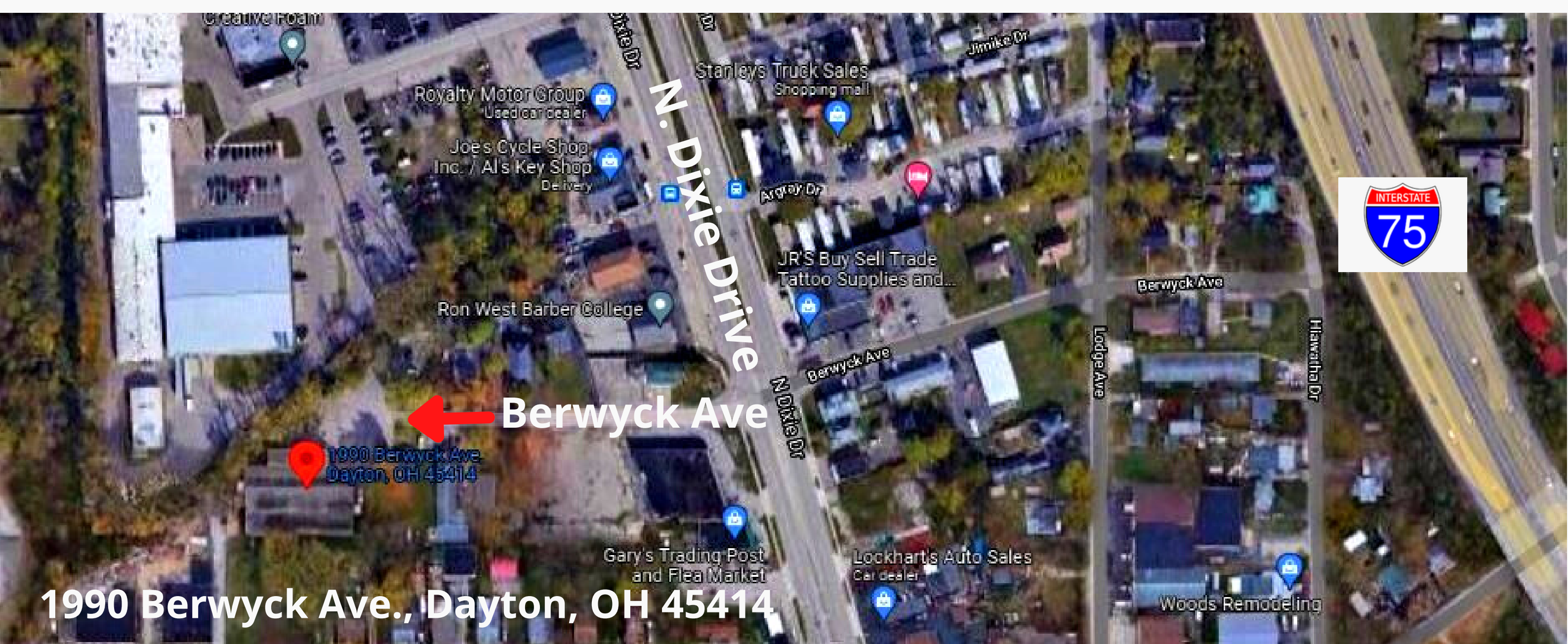
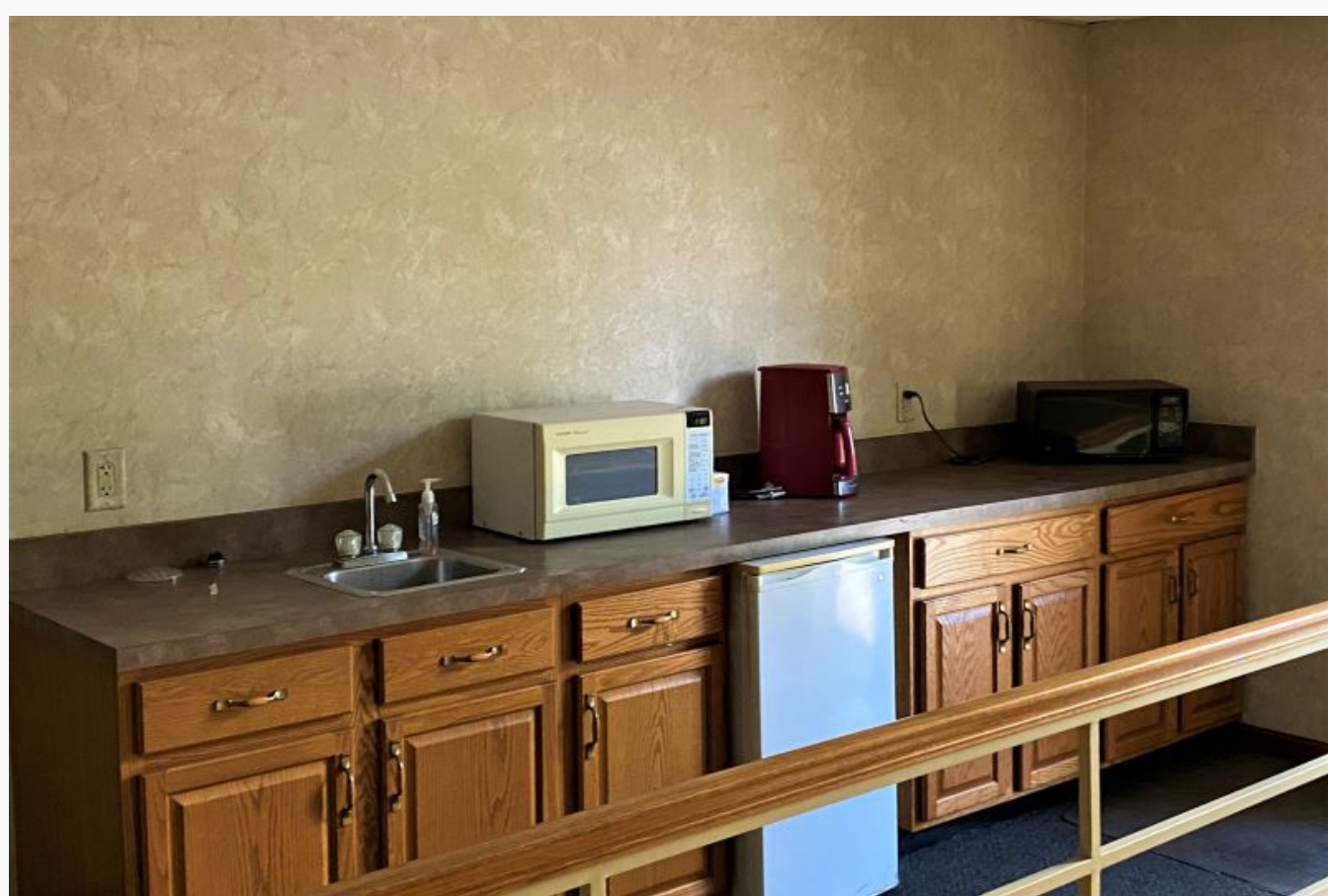


Crest
Commercial Realty

Industrial Building

FOR SALE

\$550,000



Tracy Rutherford

O 937-222-1600 Ext. 121
C 937-414-2271
trutherford@crestrealtyohio.com

