



Office/Retail  
**FOR LEASE**  
**Kingsridge Plaza**  
3 units available



For more information,  
please contact:

**Tim Albro**

O 937-222-1600 Ext. 104  
C 937-609-8071  
talbro@crestrealtyohio.com

**Nick**

**Miller-Jacobson**

O 937-222-1600 Ext. 105  
C 937-631-6261  
nick@crestrealtyohio.com



- Kingsridge Plaza is a 19,100 SF multi-unit, L-shaped building.
- Near busy Dayton Mall area.
- Great street vivibility and convenient parking.
- Easy access to I-75 & I-675.
- Lease rate is \$11.50/SF, NNN.
  - Tenant pays internet, utilities and interior maintenance.
- 3 spaces available
  - Former Tri More Health - 5,575 SF.
  - Former Elegance in Dance - 4,025 SF.
  - Former Unique Lawn Care - 1,600 SF.



**Crest**  
Commercial Realty

Office/Retail  
**FOR LEASE**  
**Kingsridge Plaza**

3 units available



**8963 Kingsridge -  
5,575 SF**



**Tim Albro**

O 937-222-1600 Ext. 104  
C 937-609-8071  
talbro@crestrealtyohio.com

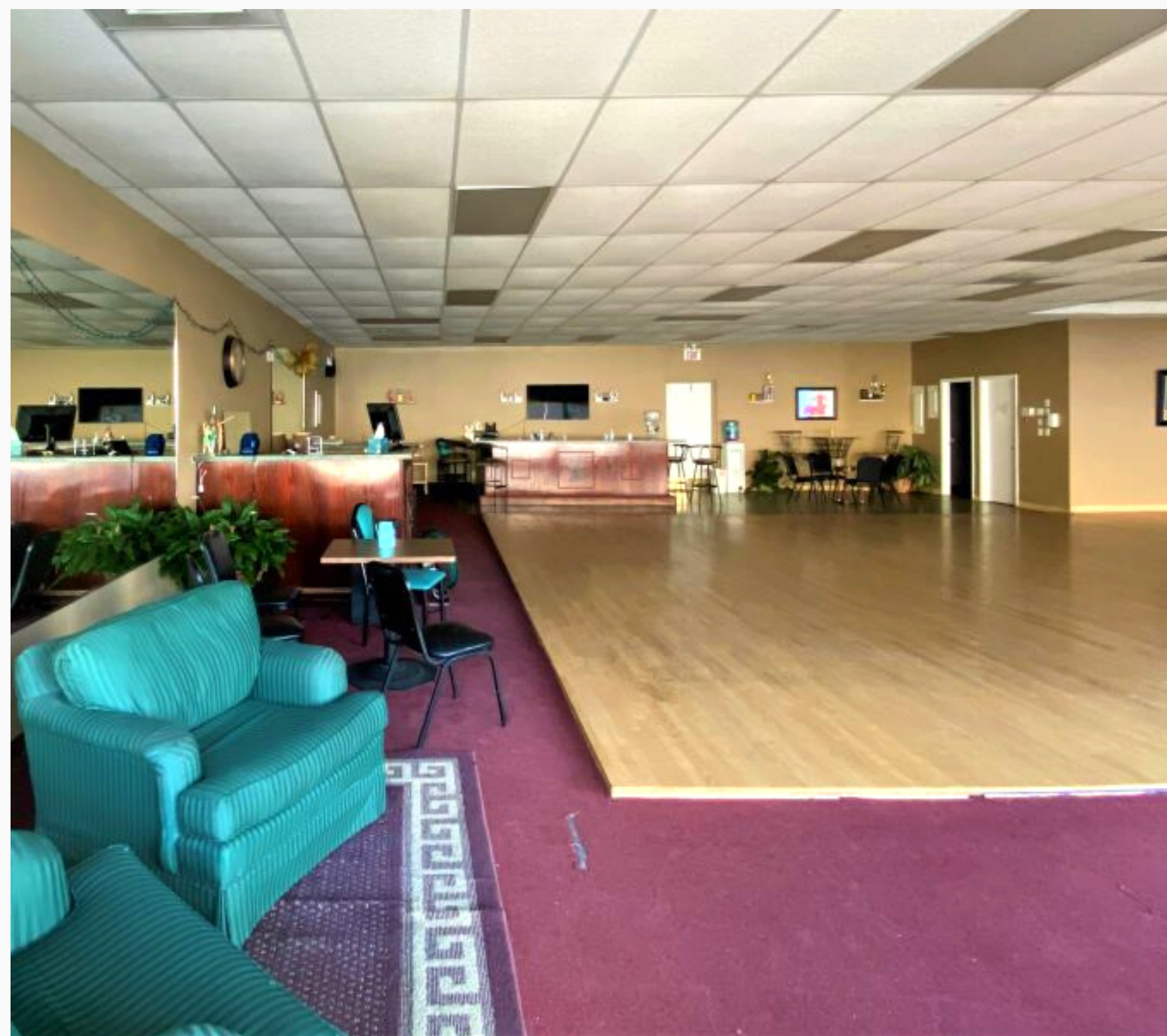




**Crest**  
Commercial Realty

Office/Retail  
**FOR LEASE**  
**Kingsridge Plaza**

3 units available



**Tim Albro**

O 937-222-1600 Ext. 104  
C 937-609-8071  
talbro@crestrealtyohio.com





**Crest**  
Commercial Realty

Office/Retail  
**FOR LEASE**  
**Kingsridge Plaza**  
3 units available



**Tim Albro**

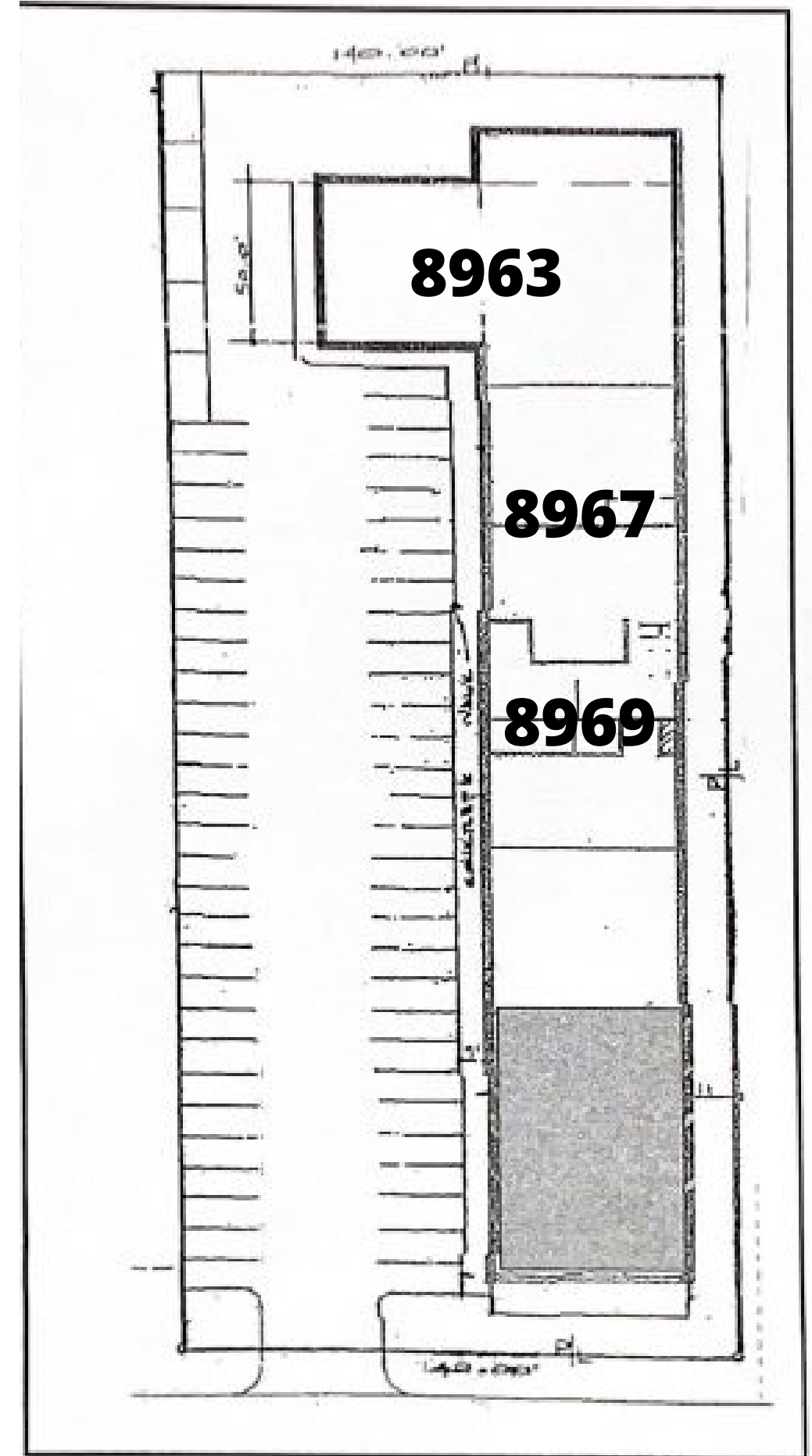
O 937-222-1600 Ext. 104  
C 937-609-8071  
talbro@crestrealtyohio.com





**Crest**  
Commercial Realty

Office/Retail  
**FOR LEASE**  
**Kingsridge Plaza**



**DEMOGRAPHICS**

	1-mile	3-mile	5-mile
<b>Population</b>			
2026 Projection	4,596	58,377	147,031
2021 Estimate	4,739	60,810	137,413
<b>Household Income</b>			
2021 Avg Household Income	\$80,288	\$87,526	\$95,806
2021 Med Household Income	\$65,047	\$67,500	\$72,621
<b>Housing Value</b>			
Medium Home Value	\$175,853	\$174,573	\$192,074

\*Demographics provided by CoStar Group, www.costar.com, 2022 dataset

**Tim Albro**

O 937-222-1600 Ext. 104  
C 937-609-8071  
talbro@crestrealtyohio.com

