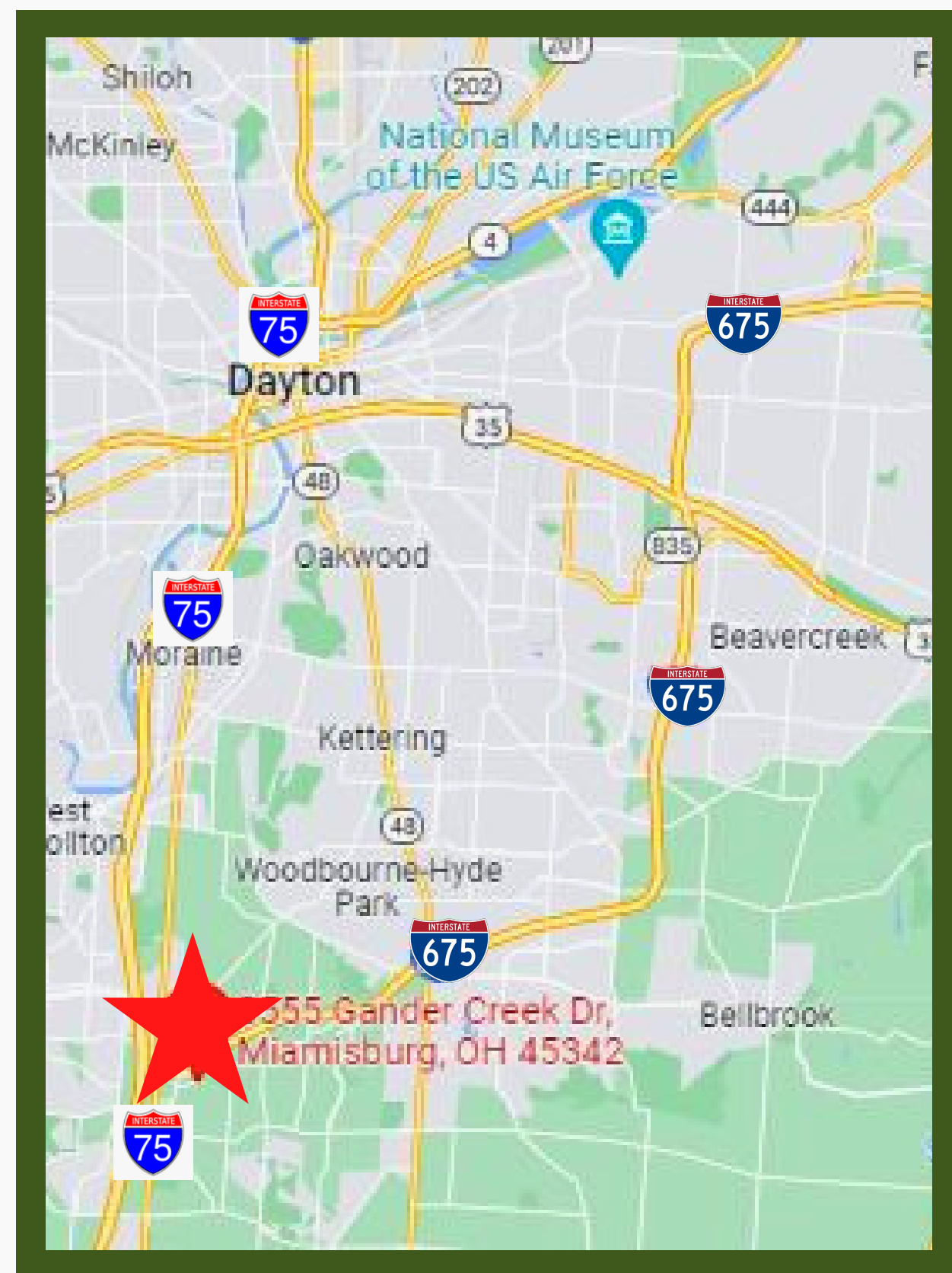




Building Highlights

- Well-situated office park in Miamisburg.
- 75,000 SF building/350 parking spaces.
- Surrounded by trees and green space.
- Close proximity to Miamisburg-Centerville Rd.
- Easy access to I-675 and I-75.
- Office / Flex available.
- Easy access to dock and drive-in doors.
- Swipe card access system.
- Open floor plans and high ceilings.
- Private offices, conference and kitchenette.
- Plentiful and convenient surface parking.
- **3 units / Up to 23,000 SF available.**
- **Competitive Lease Rates**
- **Negotiable Tenant Allowance.**



For more information, please contact:

Tony Taylor

O 937-222-1600 Ext. 103
C 937-776-0419
ast@crestrealtyohio.com





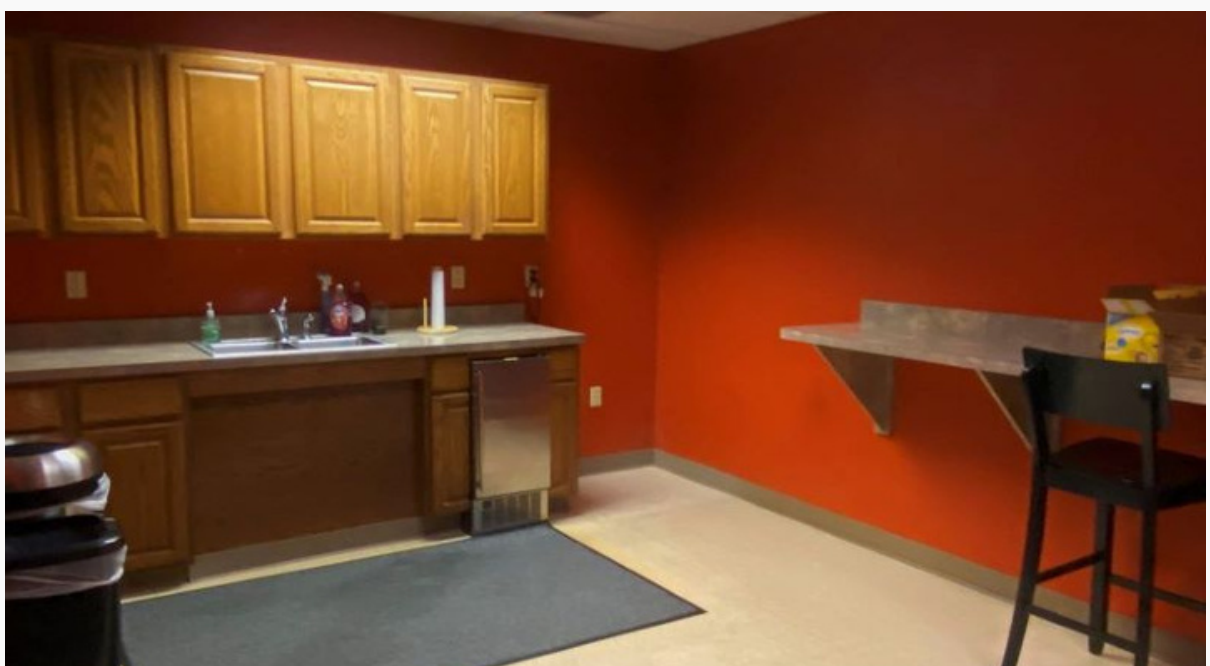
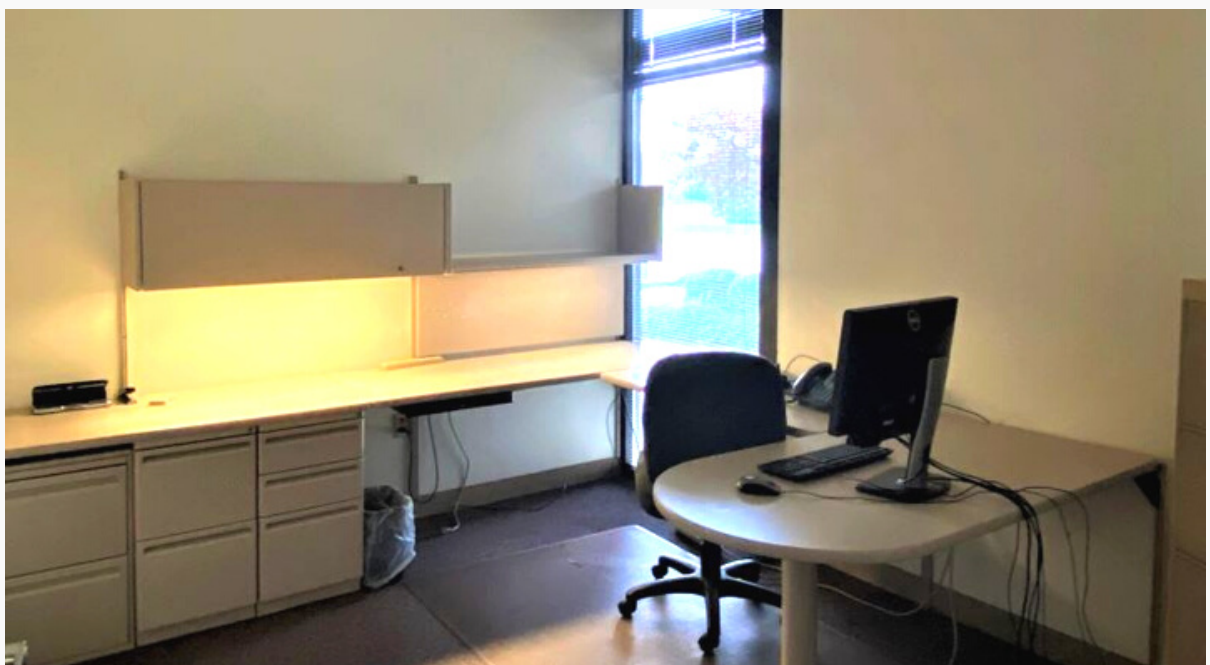
Crest
Commercial Realty

Office / Flex FOR LEASE

8555 Gander Creek Drive, Miamisburg, OH 45342

8555 ~ 7,500 SF

Gander Creek Office Park



For more information, please contact:

Tony Taylor

O 937-222-1600 Ext. 103
C 937-776-0419
ast@crestrealtyohio.com



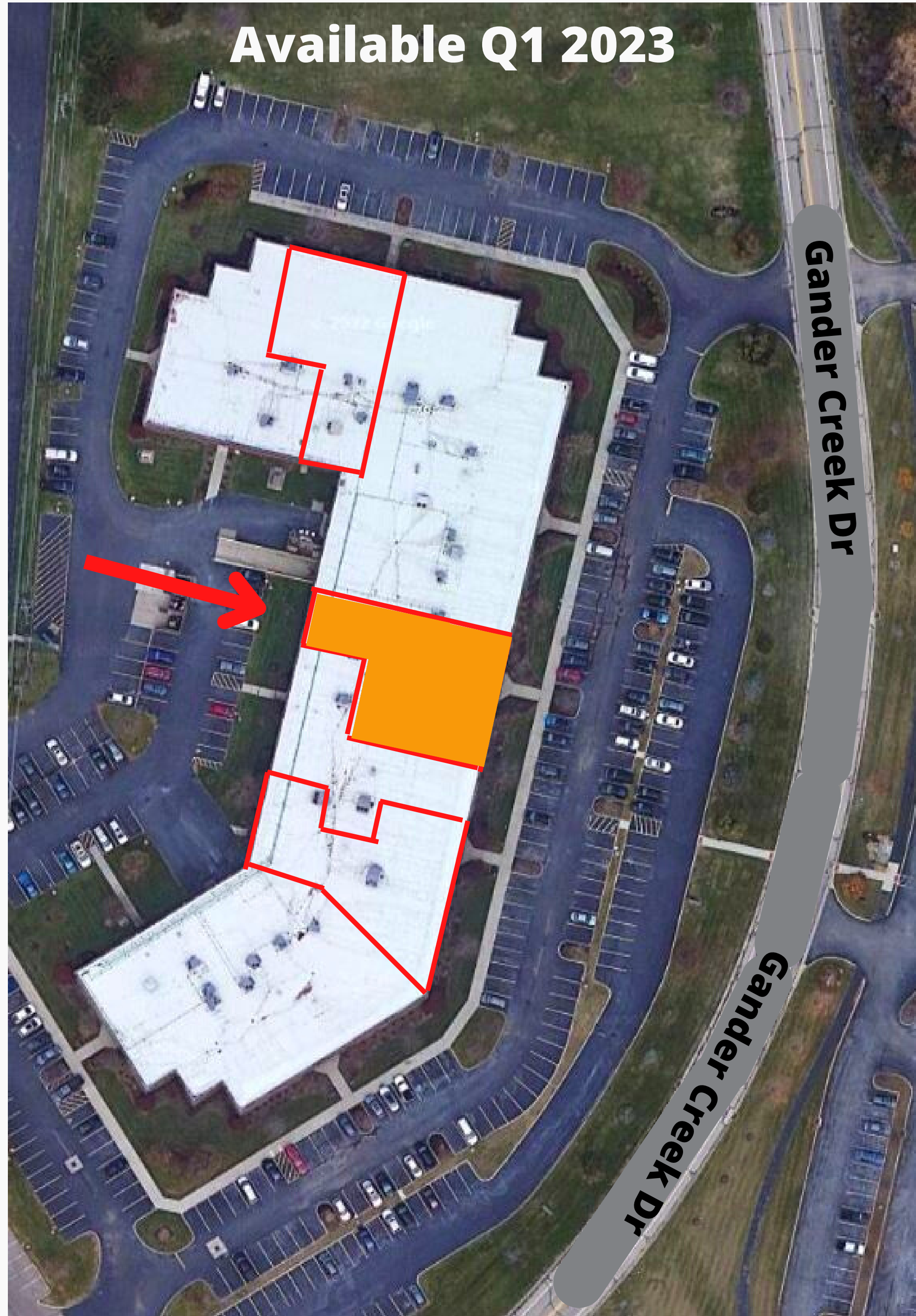
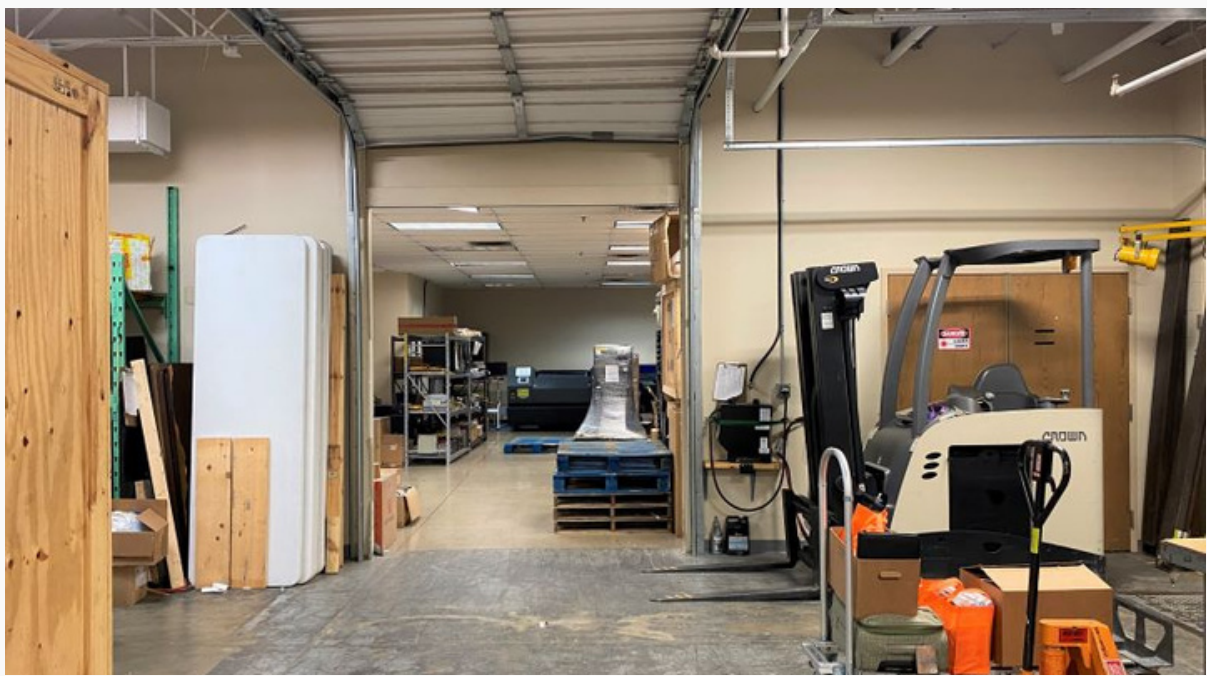
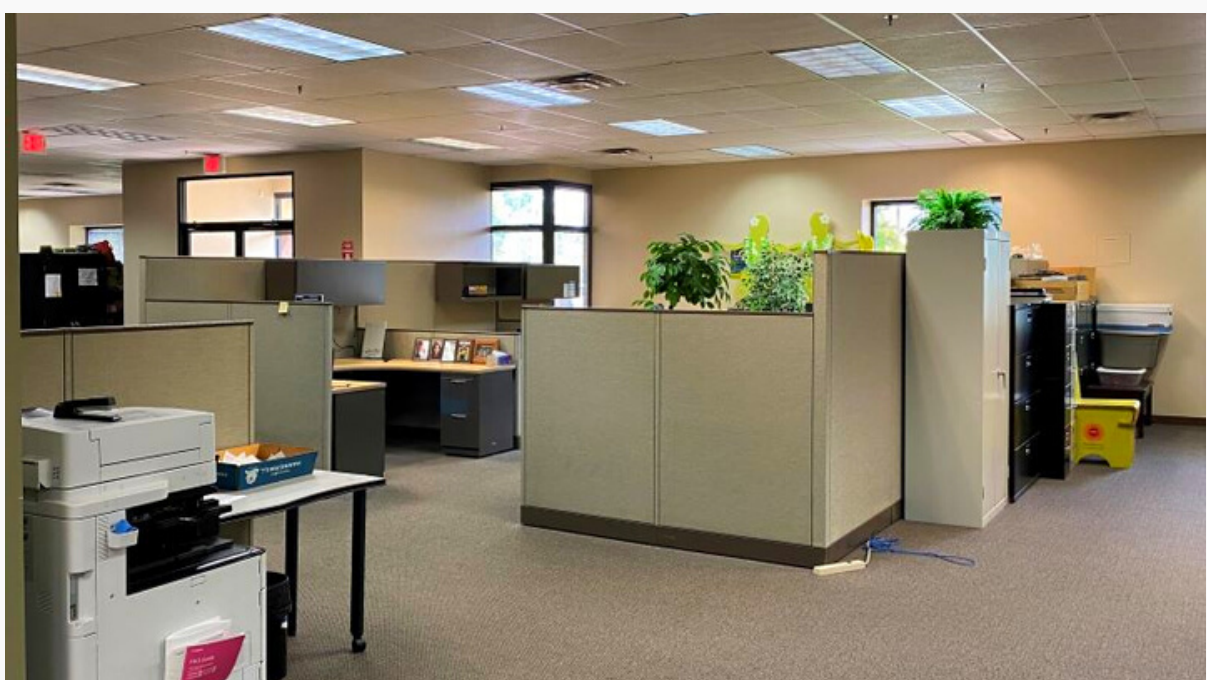


Office / Flex FOR LEASE

8535 Gander Creek Drive, Miamisburg, OH 45342

8535 ~ Unit C ~ 8,300 SF

Gander Creek Office Park



For more information, please contact:

Tony Taylor

O 937-222-1600 Ext. 103
C 937-776-0419
ast@crestrealtyohio.com





Crest

Commercial Realty

Office / Flex FOR LEASE

8555 Gander Creek Drive, Miamisburg, OH 45342

8535~ Unit B ~ 7,200 SF

Gander Creek Office Park



For more information, please contact:

Tony Taylor

O 937-222-1600 Ext. 103
C 937-776-0419
ast@crestrealtyohio.com

